

# Need Help? Help Starts Here



## Call United Way's 2-1-1 to connect to local resources:

Hu 2-1-1 txog kev pabcuam hov zejzog. Muaj neeg pab txhais lus Hmoob.

Llame al 211 para conectarse a los recursos. Traducción disponible en español.



### **FOOD**

- Food pantries in your area
- Community meals
- Information about FoodShare or WIC
- Information about free/reduced-price school meals



### **IMPROVE FINANCIAL SITUATION**

- Help finding a job or job training
- Assistance with utilities or other bills
- Education on finances, savings or budgeting



### **CHILD CARE/SERVICES**

- Help finding child care
- Emergency diapers or formula
- Youth programming
- Mentoring
- Tutoring assistance for your child



### **HEALTH CARE**

- Information about insurance or Medicaid
- Mental health counseling or substance abuse treatment
- Services for an aging family member



### **HOUSING**

- Help paying rent or mortgage
- Emergency shelter
- Help finding affordable housing



### **PARENTING SUPPORT**

- In-home parent coaching
- Parenting classes



### **CLOTHING**

- Infant & children's clothing from Rebecca's Closet
- Clothing for an interview or new job from the Career Closet
- Steel-toed boots from Boots to Work



### **LEGAL**

- Help finding an attorney
- Services for victims of domestic violence or sexual assault or abuse



### **TRANSPORTATION**

- Information about transportation options



**RaiseGreatKids.org**

Talk • Sing • Read • Play  
Every Child. Every Day.

Check out RaiseGreatKids.org for resources for parents and caregivers, local family friendly events and more.

**United Way  
of Marathon County**  
UnitedWayMC.org



# Wausau Summer Meal Sites - 2018

FREE healthy meals for kids and teens! Available to any child 18 years of age and under **even if not enrolled in Summer School.**

No need to sign up or apply – just show up and enjoy!

\*Meals must be eaten on site.

## Elementary School Sites -

- GD Jones • Hawthorn Hills • Lincoln
- Riverview • Thomas Jefferson

June 11 - July 19, Monday - Thursday

(No Meal Service July 4 or 5)

Breakfast 7:45 a.m. - 8:15 a.m.

Lunch 12:15 p.m. - 12:45 p.m.

## Middle School Sites -

June 11 - July 19 (No Meal Service July 4 or 5)

Horace Mann Middle School (Monday - Thursday)

Breakfast 7:30 a.m. – 8:45 a.m.

Lunch 10:30 a.m. – 12:30 p.m.

John Muir Middle School (Monday & Tuesday only)

Breakfast 7:30 a.m. - 8:45 a.m.

Lunch 11:30 a.m. - 12:30 p.m.

## High School Sites -

Wausau West High School (Monday - Thursday)

June 11 - July 26 (No Meal Service July 4 or 5)

Breakfast 7:30 - 8:15 a.m.

Lunch 11:00 - 11:45 a.m.

## Other Sites -

Boys & Girls Club of the Wausau Area (Monday-Friday)

June 8 - August 22 (No Meal Service July 4)

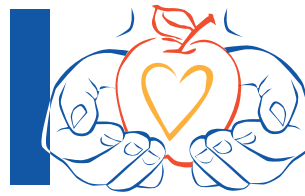
Breakfast 7:30 - 8:00 a.m.

Lunch 12:00 - 12:30 p.m.



**Call 2-1-1 for more information about Summer Meals and other community food resources:**

- Food pantries in your area
- Community meals
- Information about FoodShare (food stamps) or WIC
- Information about free/reduced-price school meals



Marathon County  
**Hunger  
Coalition**

an initiative of United Way

## Hunger Coalition Member Food Pantries Serving Wausau:

- **Covenant Community Presbyterian Church Food Pantry**  
1806 Weston Ave, Schofield - 715-359-6467
- **First Hmong Missionary Alliance Church Food Pantry**  
5500 Stettin Dr., Wausau - 715-842-9218
- **First Presbyterian Church Food Pantry**  
406 Grant St., Wausau - 715-842-2116  
(Community meals also offered).
- **Salvation Army**  
202 Callon St., Wausau - 715-845-4272
- **The Neighbors' Place**  
745 Scott St., Wausau - 715-845-1966
- **Wesley United Methodist Church Food Pantry**  
1101 Elm St., Wausau - 715-842-3768

\*Call for food pantry hours, information about what to bring with you to your pantry visit, and additional services offered.

## Are you unable to get to a food pantry during its open hours? Here's an option that may help! Did you know...?

Many food pantries allow a pre-authorized person of your choice (Proxy) to pick up food for you/your family in certain situations. Examples of situations when a Proxy may be appropriate include:

- If you have a medical issue, disability or other condition that makes pick up at the food pantry impossible for you.
- If your work hours conflict with the food pantry's scheduled hours.

Please call a specific pantry in advance to find out if they allow Proxy pick ups and details about their Proxy requirements and process, as the process varies by pantry.